

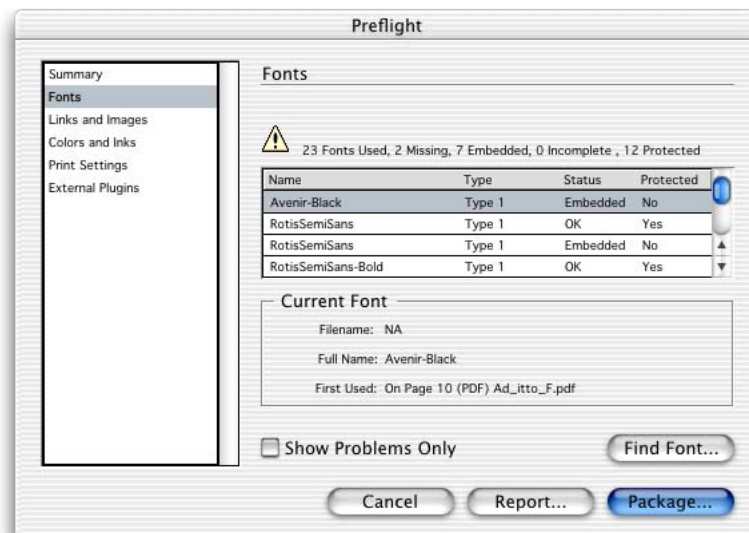
- Custom to open the Custom Spread Flattening dialog box for specifying settings.

Note: If you know that a customer has used flattener styles throughout the document, and you know that their flattener styles may not be appropriate for your workflow, you can easily apply a flattener style that overrides the document. In the Advanced panel of the Print or Export dialog box, specify a transparency flattener style and also select Ignore Spread Overrides. If you want to apply your own spread overrides, you may want to use the Flattener Styles palette to remove or redefine flattener styles as needed before printing or exporting.

Preflighting the document InDesign has a built-in Preflight command that automates the process of inspecting documents for missing or incorrectly prepared components, such as fonts, or linked graphics and images. When you Preflight a document (choose File > Preflight), a Summary panel appears. If the document contains problems that require attention before you output the file, you'll see warning icons (⚠).

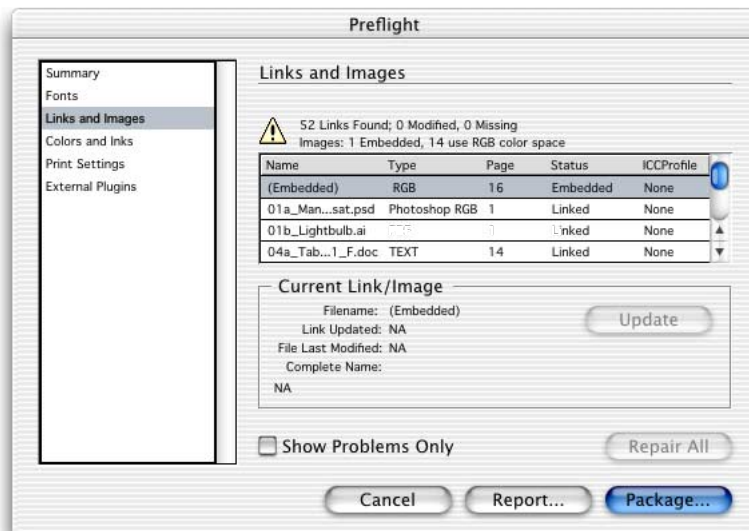
To view more detailed information, click the panel names to display the Fonts, Links and Images, Color and Inks, Print Settings, and External Plug-ins panels.

Fonts panel



When you preflight an InDesign document that contains missing fonts (including fonts missing from linked EPS and PDF files), the Fonts panel tells you the first page where the missing font is used. You can click the Show Problems Only option to view a concise list of the missing fonts; clicking Find Font opens the Find Font dialog box, so you can gather more information about the missing fonts, or replace missing fonts with available ones (keep in mind that you cannot use the Find Font command to replace missing fonts that are included in imported graphics). For more information, see “Managing Missing Fonts” on page 6.

Links and Images panel



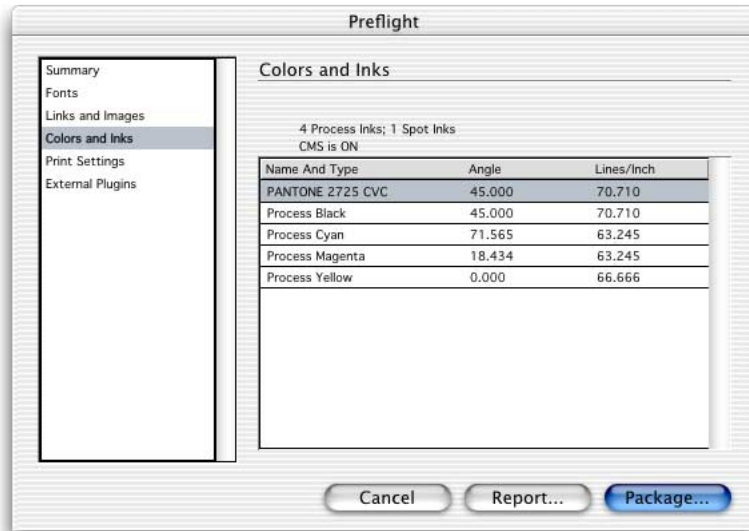
Using the Links and Images panel, you can review the status of the document's linked graphics, images, and placed PDF files. You can also verify the links for nested DCS or TIFF files inside an EPS graphic if the Read Embedded OPI Image Links option was selected when you placed these EPS files. (Note: Adobe Illustrator doesn't include OPI comments in EPS files when linked graphics are missing. Before customers save EPS files from Illustrator, they must verify that the Links palette in Illustrator is free of missing links.)

If the linked files have been modified or if they contain RGB image data, a warning appears in this panel, because such files are not suitable for 4-color process separation workflows. (Note: InDesign can't detect RGB color data in EPS or PDF files; customers must check for RGB data before saving files in those formats.)

Update/Relink: The Update option allows you to select an individual link that is missing or is modified, and then resolve the link status by simply clicking the Update button. If the original path or filename has been altered since the document was last saved, click Relink to locate the missing link.

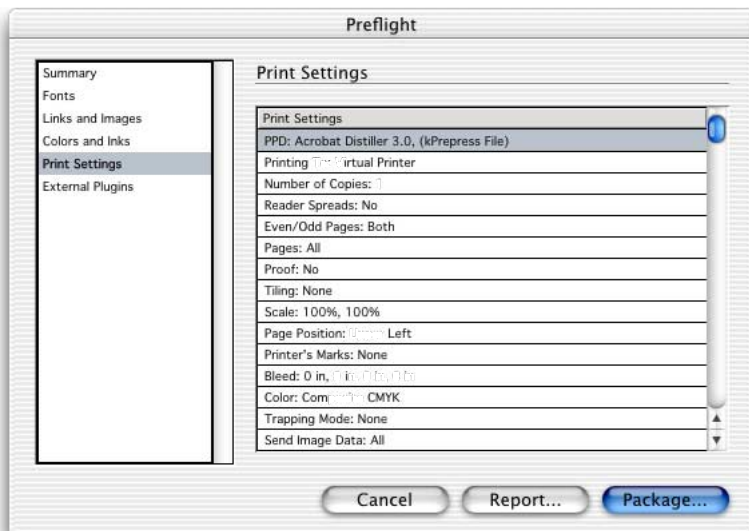
Repair All: The Repair All option provides a convenient way to resolve all missing or modified links. If the original path or filenames have been altered since the document was last saved, InDesign displays the Find Link dialog box so that you can locate the links and globally resolve missing or modified links.

Colors and Inks panel



In the Colors and Inks panel you can view the inks specified in the InDesign document, including inks specified in placed EPS and PDF files. The Angle and Lines/Inch values displayed here are based on the optimized screens for the current default PostScript printing device.

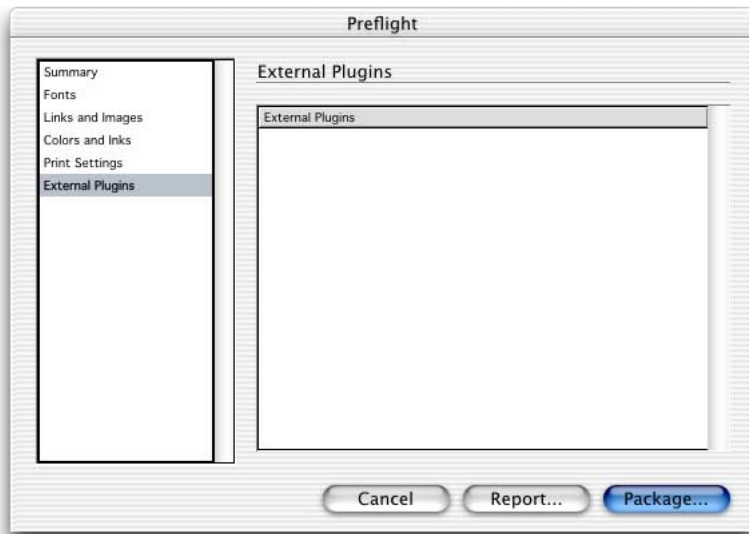
Print Settings panel



The Print Settings panel summarizes the document's current print settings. This can help your staff to identify differences between customer-supplied laser proofs and those created at your shop.

Note: Links in multiple folders are relinked or updated when each folder is opened using the Relink command.

External Plug-ins panel



The External Plug-ins panel summarizes the usage of any plug-ins which are not included with the retail version of InDesign but are required to reproduce the document.